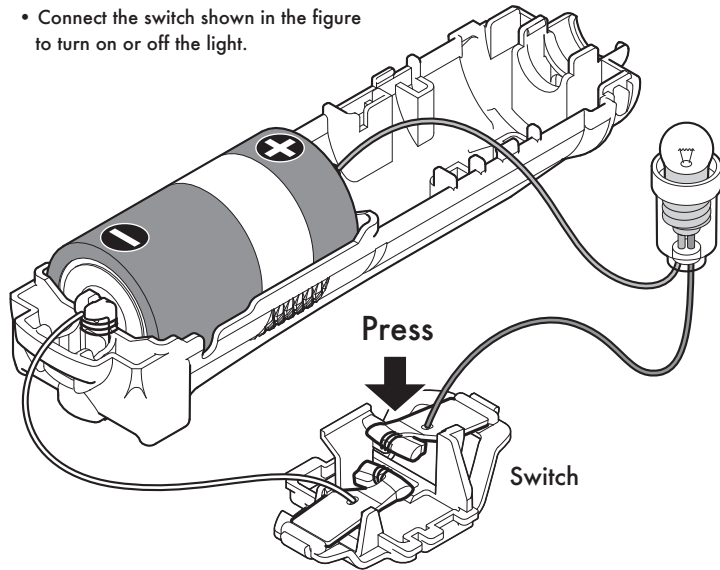




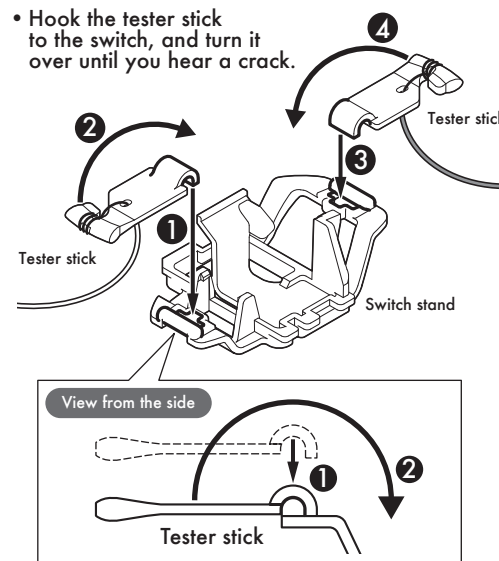
Connect the switch and turn on the light

- Connect the switch shown in the figure to turn on or off the light.



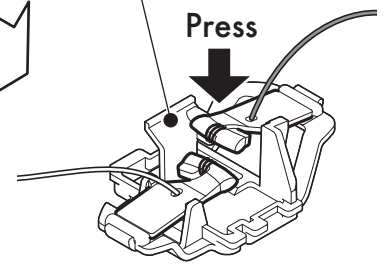
How to assemble the switch

- Hook the tester stick to the switch, and turn it over until you hear a crack.



- Press until you hear a click to turn on the switch.

- * If you press here, the tester stick will come off, and the switch will turn off.

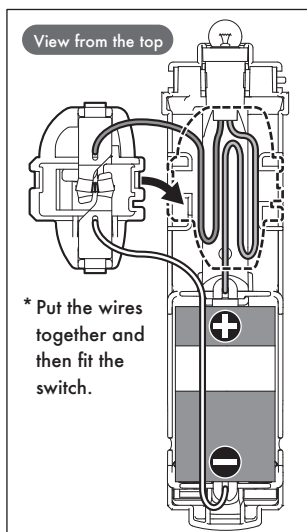


Let's try to make something that uses the mechanism of light.

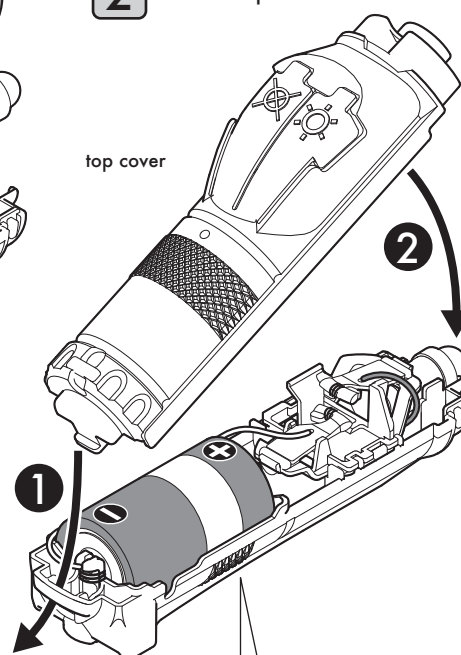


Making a flashlight

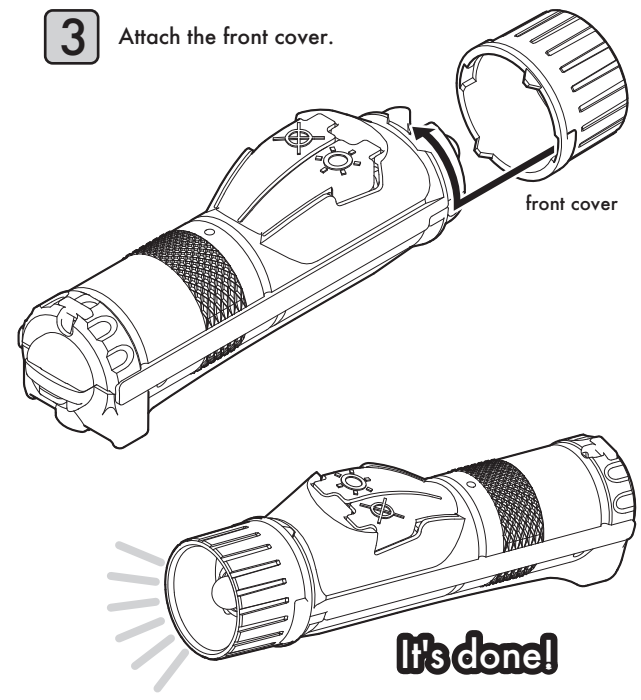
- Put the wires together as shown in the diagram and fit the socket and switch with the wires.



- Put the top cover on.



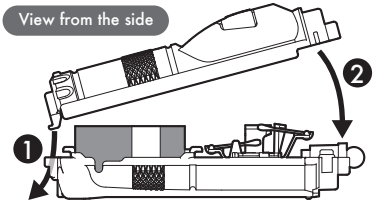
- Attach the front cover.



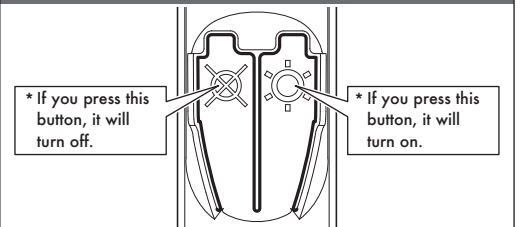
Checklist when the flashlight does not shine

* If you check it, put a ○ on the right.

Are the wires connected in the wrong way?	
Are the wires damaged or disconnected?	
Is the light bulb in the socket loose?	
How are the wires or switches connected to the batteries?	
Are the batteries weak?	

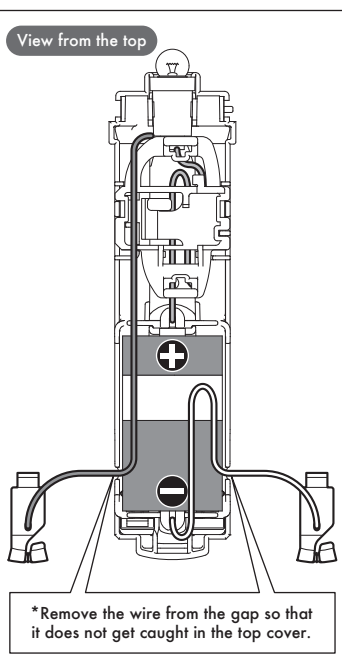
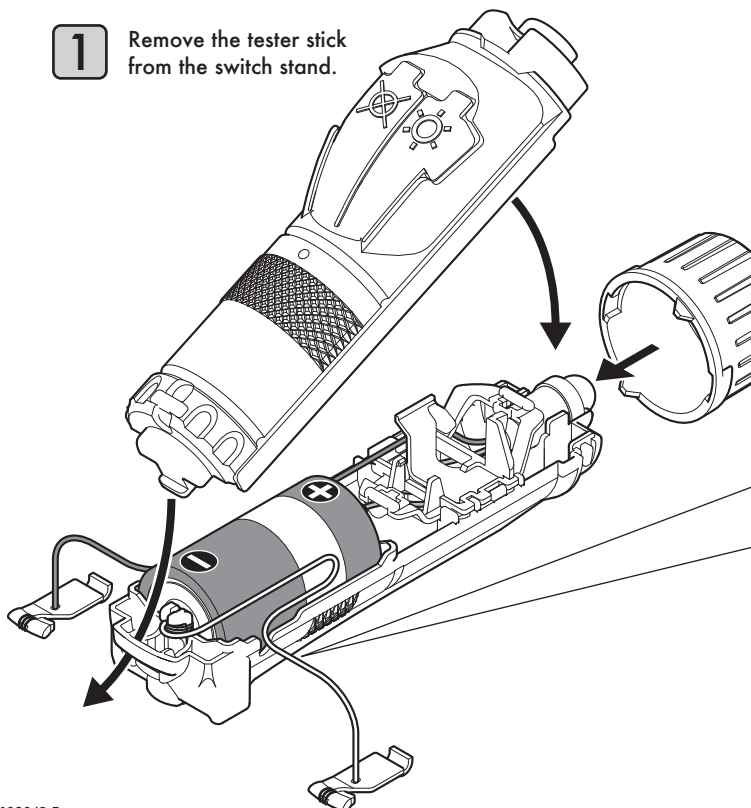


How to use the flash switch

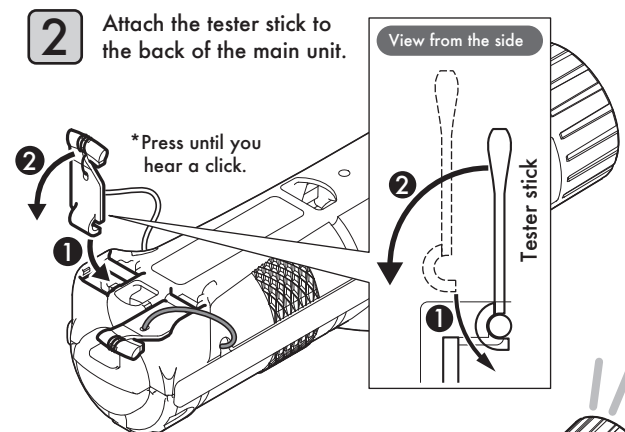


Making a handy tester

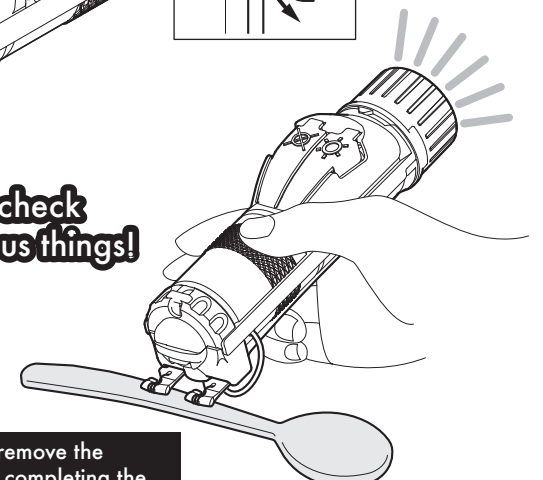
- Remove the tester stick from the switch stand.



- Attach the tester stick to the back of the main unit.



Let's check various things!



Make sure to remove the batteries after completing the experiment!